

# Vocabulary to pre-teach

image

edited

misleading

headline

forced perspective

caption

miscaption

# Lesson 7

Questioning images  
in the news

**What ground rules do  
we need to remember  
for today's lesson?**

# Shrinking machine invented



What do you notice about this image?

How do you think it was created?

Why do you think someone might use this image?

How might this image make a reader feel?



This image made the girl seem much smaller than she really is.

This is called forced perspective.



Florence Ackland



Florence Ackland

# Learning objective

To question images presented in news stories

## Learning outcomes

- Recognise that pictures in news stories can be used in misleading ways, and describe the effect this could have
- Identify some misleading ways in which images might be used in news reports
- Apply strategies for spotting misleading images

## Journalist training school

A good journalist knows that images can be faked and used to trick people into believing fake news. They need to be able to spot misleading images so they can avoid reporting fake news themselves.

**How much do you agree or disagree?**

“It’s OK for a news report to use misleading images to grab the reader’s attention.”



agree

disagree



**A caption  
describes what  
is happening  
in an image**

**This is  
the caption**



Dawid Zawila/Unsplash

**The sun sets over some mountains.**



# miscaptioned image



When a caption says that a photo shows something it doesn't

A



Gardener in Germany works out how to grow money trees

B



Ancient treasure dug up from thousands of years ago

**Do you think your caption describes what is happening in the picture? Why or why not?**

**If someone believes this, how might they feel or behave?**

**Why someone have made this image?**





Florence Ackland

£50 notes buried in soil

**This is the real caption.**

**How might the reader feel when they realise that the other captions are not true?**

# What tips could help someone spot a miscaptioned image?

Look for clues in the image.

Is there anything that suggests the image isn't what, where or when the caption claims?

If you are still not sure, a trusted adult can help check other trusted news sources to see what images they are using for the story.

They could also help with a reverse image search.





# edited image



When a picture is changed with a computer programme so that it shows something different



A



B



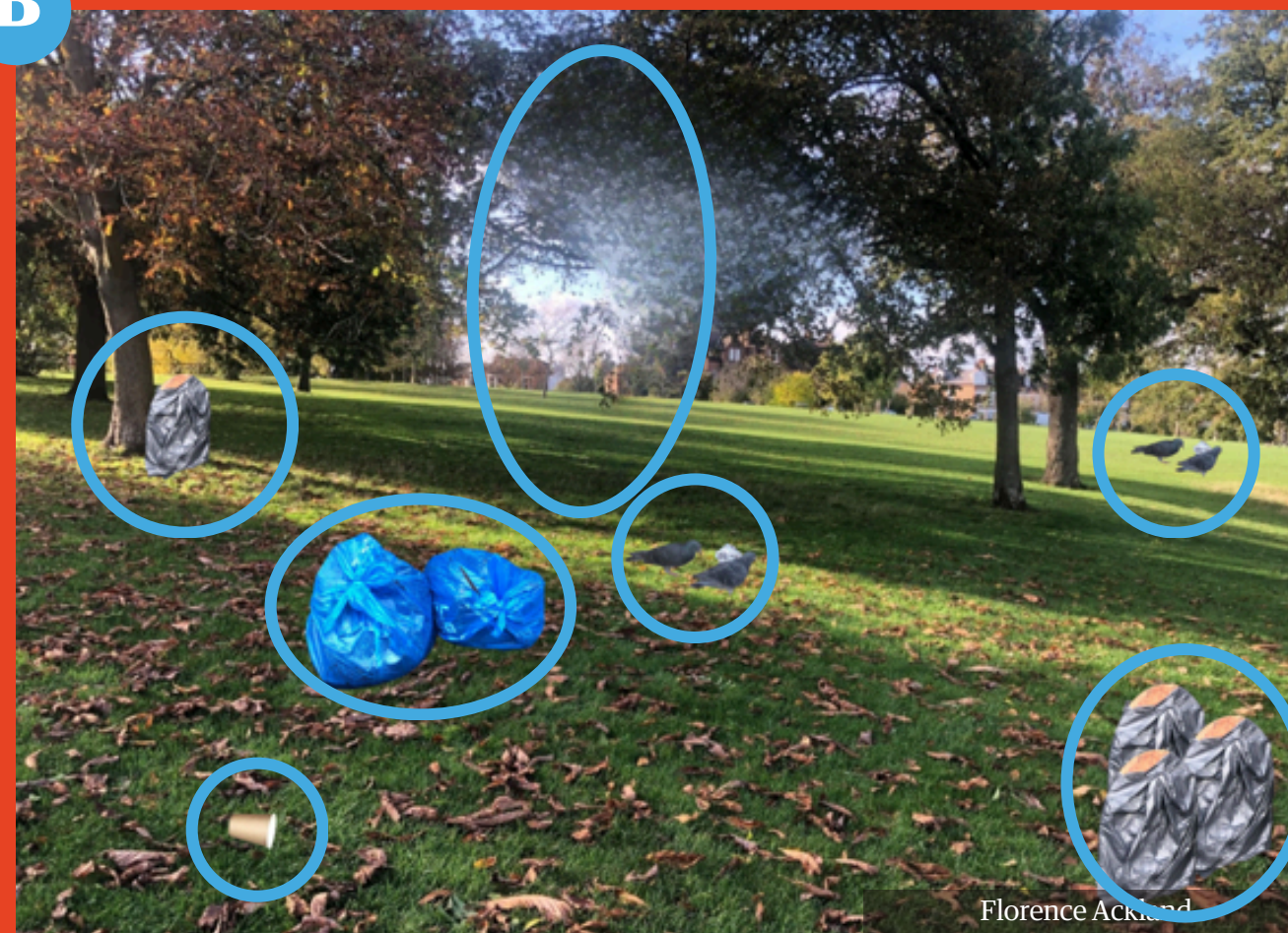
**Can you find all of the differences between these two images?  
Which image is the original and which has been edited?**



A



B



**Can you find all of the differences between these two images?  
Which image is the original and which has been edited?**





**Imagine this picture was shared with the headline:**

**Picnickers leave park in total mess**

**Why might someone have edited this image in this way?**

# What tips could help someone spot an edited image?

Look for clues in the image.

Do parts of the image look strangely out of place?

Is anything blurry (or pixelated)?

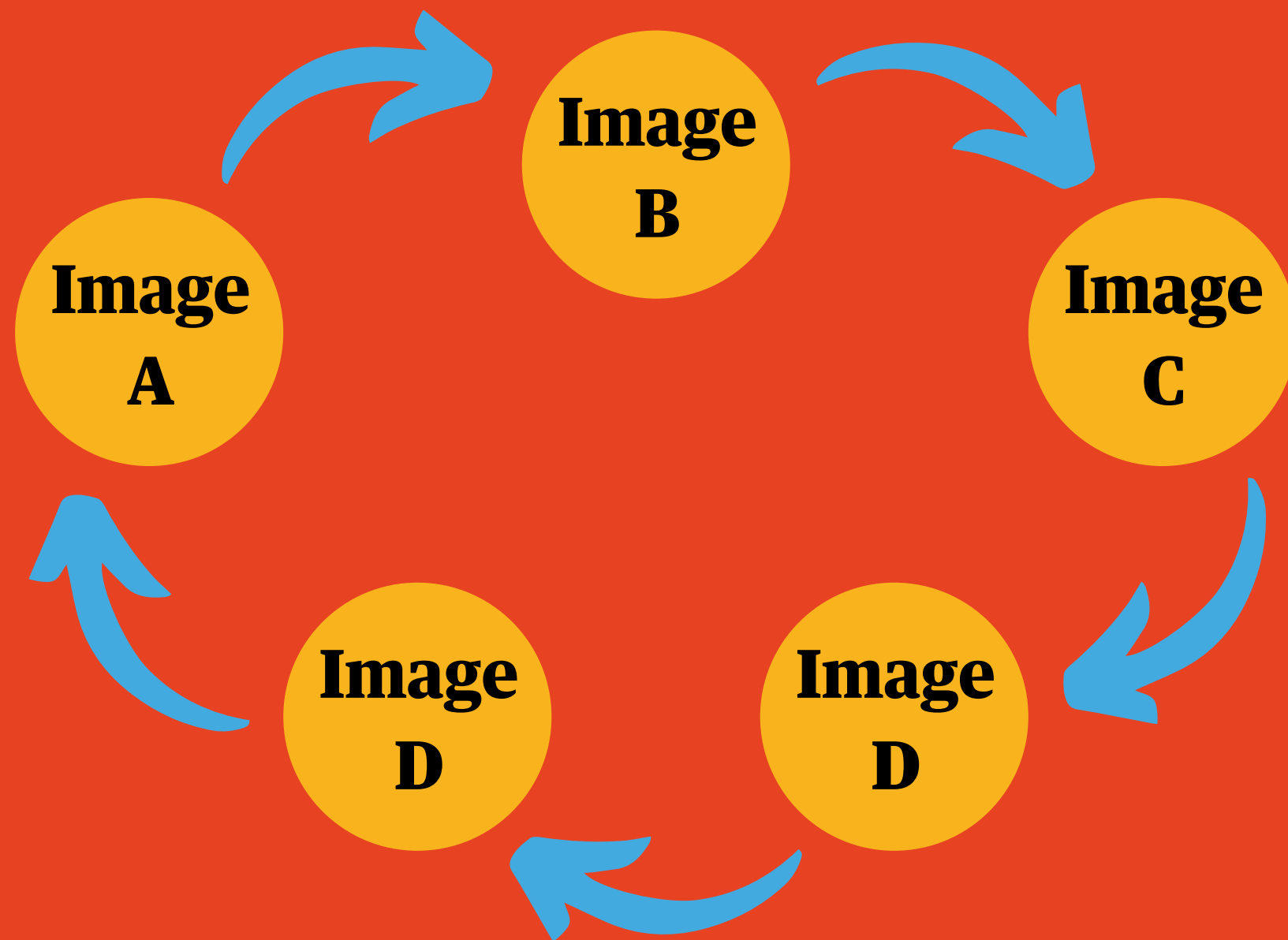
Can you spot missing shadows?

If you are still not sure, a trusted adult can help check other trusted news sources to see what images they are using for the story.


They could also help with a reverse image search.







**In pairs, discuss and agree your choice for each image. Record your response on your sheet.**

<p><b>We think this image is...</b> <b>A</b></p> <ul style="list-style-type: none"> <li><input type="checkbox"/> Real and reliable</li> <li><input type="checkbox"/> Misleading because it's <b>miscaptioned</b></li> <li><input type="checkbox"/> Misleading because it uses <b>forced perspective</b></li> <li><input type="checkbox"/> Misleading because it's been <b>edited</b></li> <li><input type="checkbox"/> We're not sure and need to find out more</li> </ul>	<p><b>We think this image is...</b> <b>B</b></p> <ul style="list-style-type: none"> <li><input type="checkbox"/> Real and reliable</li> <li><input type="checkbox"/> Misleading because it's <b>miscaptioned</b></li> <li><input type="checkbox"/> Misleading because it uses <b>forced perspective</b></li> <li><input type="checkbox"/> Misleading because it's been <b>edited</b></li> <li><input type="checkbox"/> We're not sure and need to find out more</li> </ul>
<p><b>We think this image is...</b> <b>C</b></p> <ul style="list-style-type: none"> <li><input type="checkbox"/> Real and reliable</li> <li><input type="checkbox"/> Misleading because it's <b>miscaptioned</b></li> <li><input type="checkbox"/> Misleading because it uses <b>forced perspective</b></li> <li><input type="checkbox"/> Misleading because it's been <b>edited</b></li> <li><input type="checkbox"/> We're not sure and need to find out more</li> </ul>	<p><b>We think this image is...</b> <b>D</b></p> <ul style="list-style-type: none"> <li><input type="checkbox"/> Real and reliable</li> <li><input type="checkbox"/> Misleading because it's <b>miscaptioned</b></li> <li><input type="checkbox"/> Misleading because it uses <b>forced perspective</b></li> <li><input type="checkbox"/> Misleading because it's been <b>edited</b></li> <li><input type="checkbox"/> We're not sure and need to find out more</li> </ul>
	
<p><b>Words to remember</b></p> <p><b>miscaptioned</b>      the caption says that the photo shows something it doesn't</p> <p><b>forced perspective</b>      plays a trick by making objects look bigger, smaller, further or closer than they are</p> <p><b>edited</b>      the photo has been changed, for example by taking something away or adding something in</p> <p style="text-align: right;"><b>News WISE</b></p>	

**Image**

**A**



Phone box libraries  
launch in China

- Real and reliable
- Misleading because it's **miscaptioned**
- Misleading because it uses **forced perspective**
- Misleading because it's **edited**
- We're not sure and we need to find out more



**Image  
A**



**Phone box libraries  
launch in China**

- Real and reliable
- Misleading because it's **miscaptioned**
- Misleading because it uses **forced perspective**
- Misleading because it's **edited**
- We're not sure and we need to find out more



**Image  
B**



Puppies hit the beach

- Real and reliable
- Misleading because it's **miscaptioned**
- Misleading because it uses **forced perspective**
- Misleading because it's **edited**
- We're not sure and we need to find out more



**Image  
B**



Puppies hit the beach

- Real and reliable
- Misleading because it's **miscaptioned**
- Misleading because it uses **forced perspective**
- Misleading because it's **edited**
- We're not sure and we need to find out more

**Image  
C**



**Girl lifts  
Ferris wheel**

- Real and reliable
- Misleading because it's **miscaptioned**
- Misleading because it uses **forced perspective**
- Misleading because it's **edited**
- We're not sure and we need to find out more



**Image  
C**



Florence Ackland

**Girl lifts  
Ferris wheel**

- Real and reliable
- Misleading because it's **miscaptioned**
- Misleading because it uses **forced perspective**
- Misleading because it's **edited**
- We're not sure and we need to find out more



**Image  
D**



Annoyed queues form in supermarkets during Christmas rush

- Real and reliable
- Misleading because it's **miscaptioned**
- Misleading because it uses **forced perspective**
- Misleading because it's **edited**
- We're not sure and we need to find out more



**Image  
D**



Annoyed queues form in supermarkets during Christmas rush

- Real and reliable
- Misleading because it's **miscaptioned**
- Misleading because it uses **forced perspective**
- Misleading because it's **edited**
- We're not sure and we need to find out more



**Image  
E**



Japan's over 80s football team play a match

- Real and reliable
- Misleading because it's **miscaptioned**
- Misleading because it uses **forced perspective**
- Misleading because it's **edited**
- We're not sure and we need to find out more



**Image  
E**



Japan's over 80s football team play a match

- Real and reliable
- Misleading because it's **miscaptioned**
- Misleading because it uses **forced perspective**
- Misleading because it's **edited**
- We're not sure and we need to find out more



# Remember...



If you are unsure about an image or video in the news, you can always ask a trusted adult to help you check a story.

They can help check other news websites or help you to do a reverse image search.

**How much do you agree or disagree?**

“It’s OK for a news report to use misleading images to grab the reader’s attention.”



agree

disagree